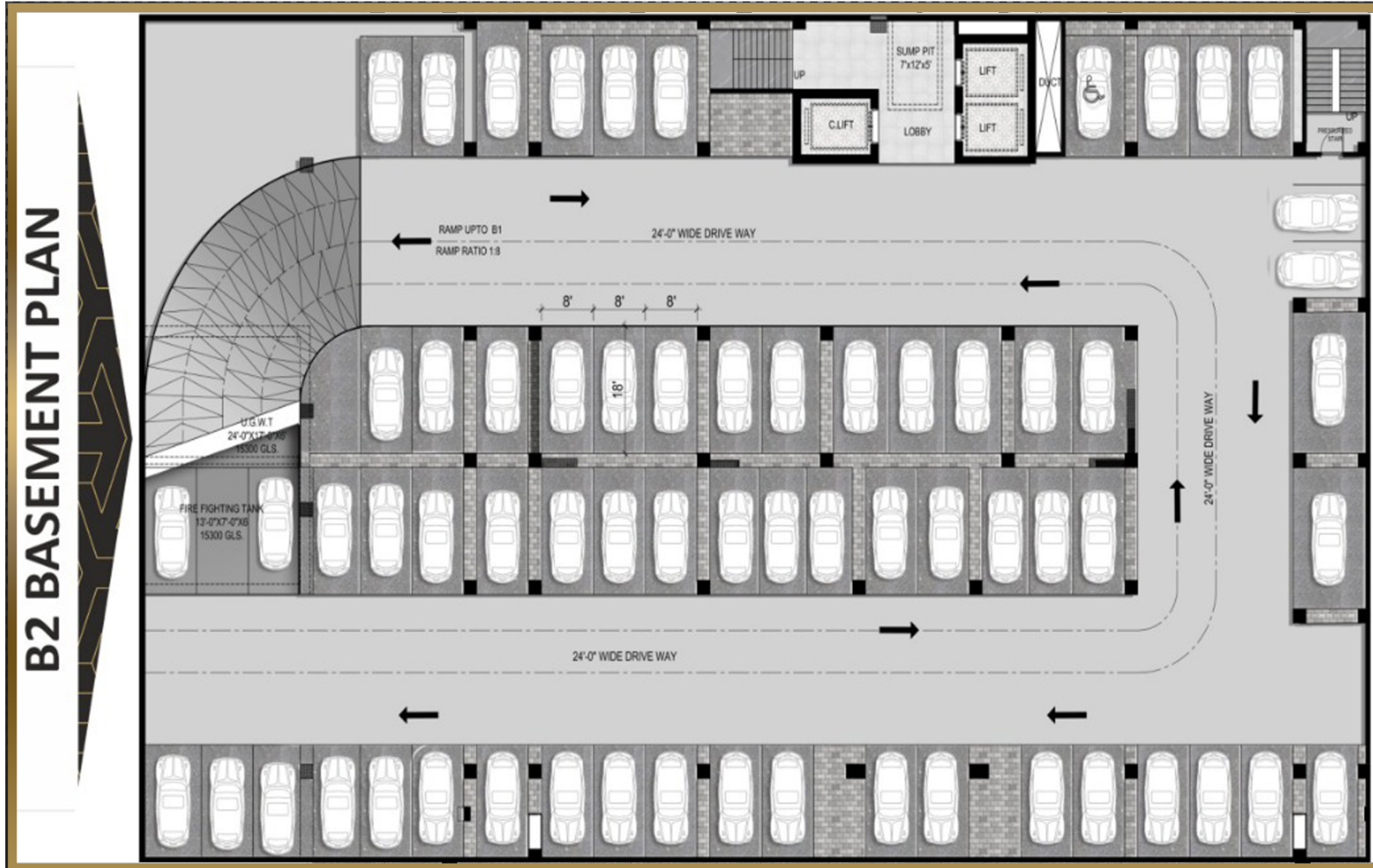


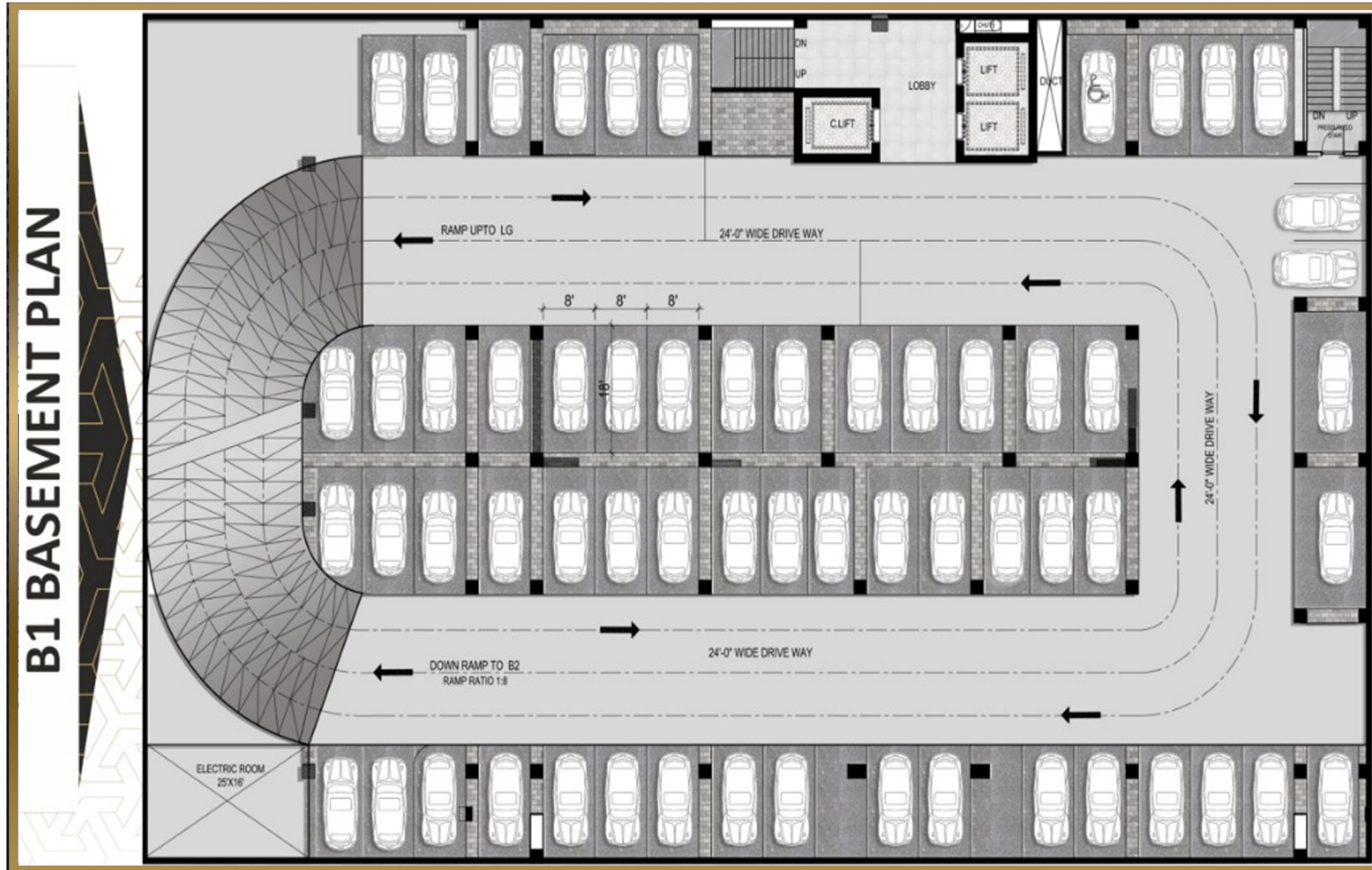


Floor Plan



www.gulbergmarina.com







LOWER GROUND FLOOR PLAN



GROUND FLOOR PLAN



1ST FLOOR PLAN



2ND FLOOR PLAN



4TH FLOOR PLAN

DAYCARE CENTRE



SWIMMING POOL

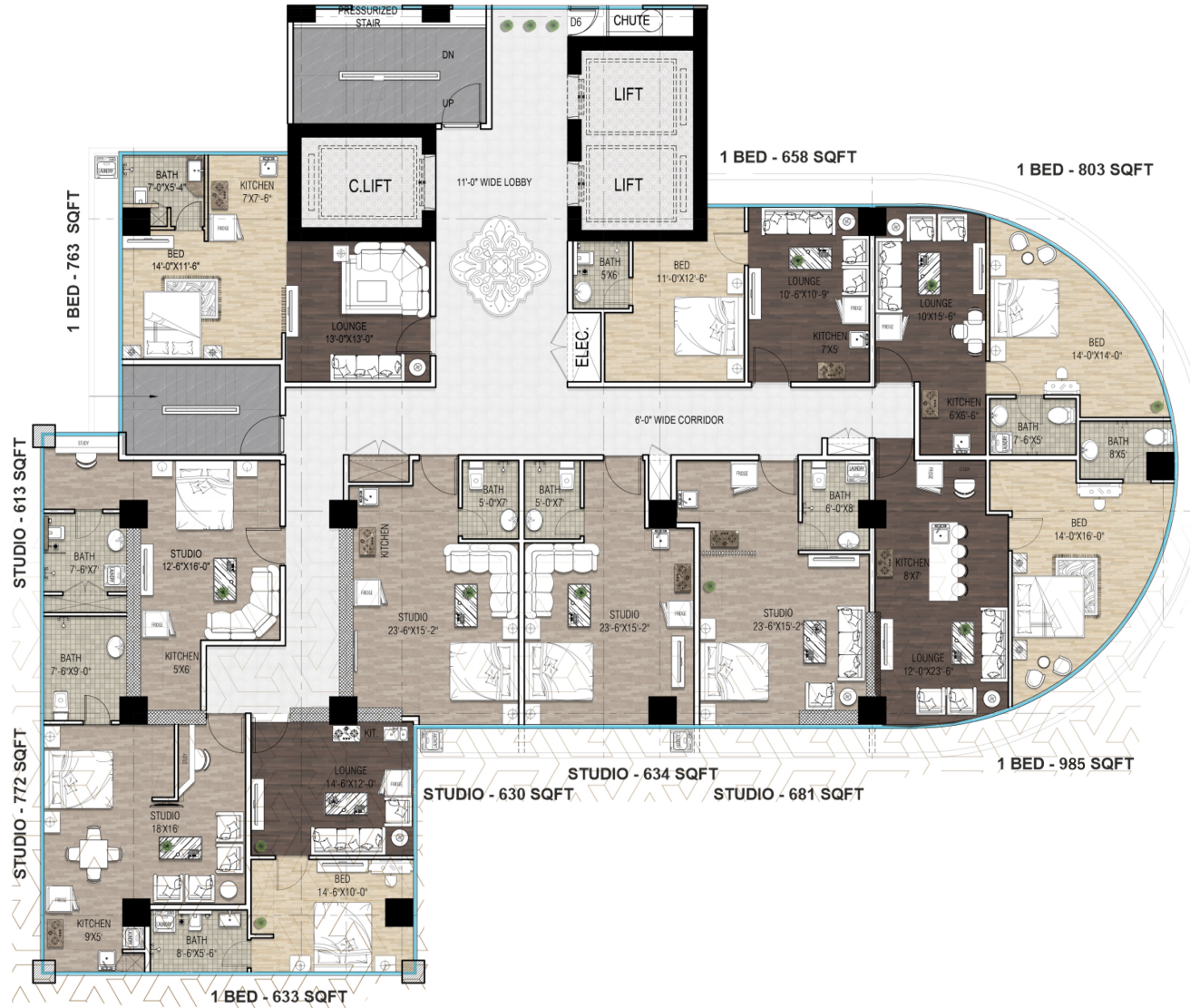


GYMNASIUM

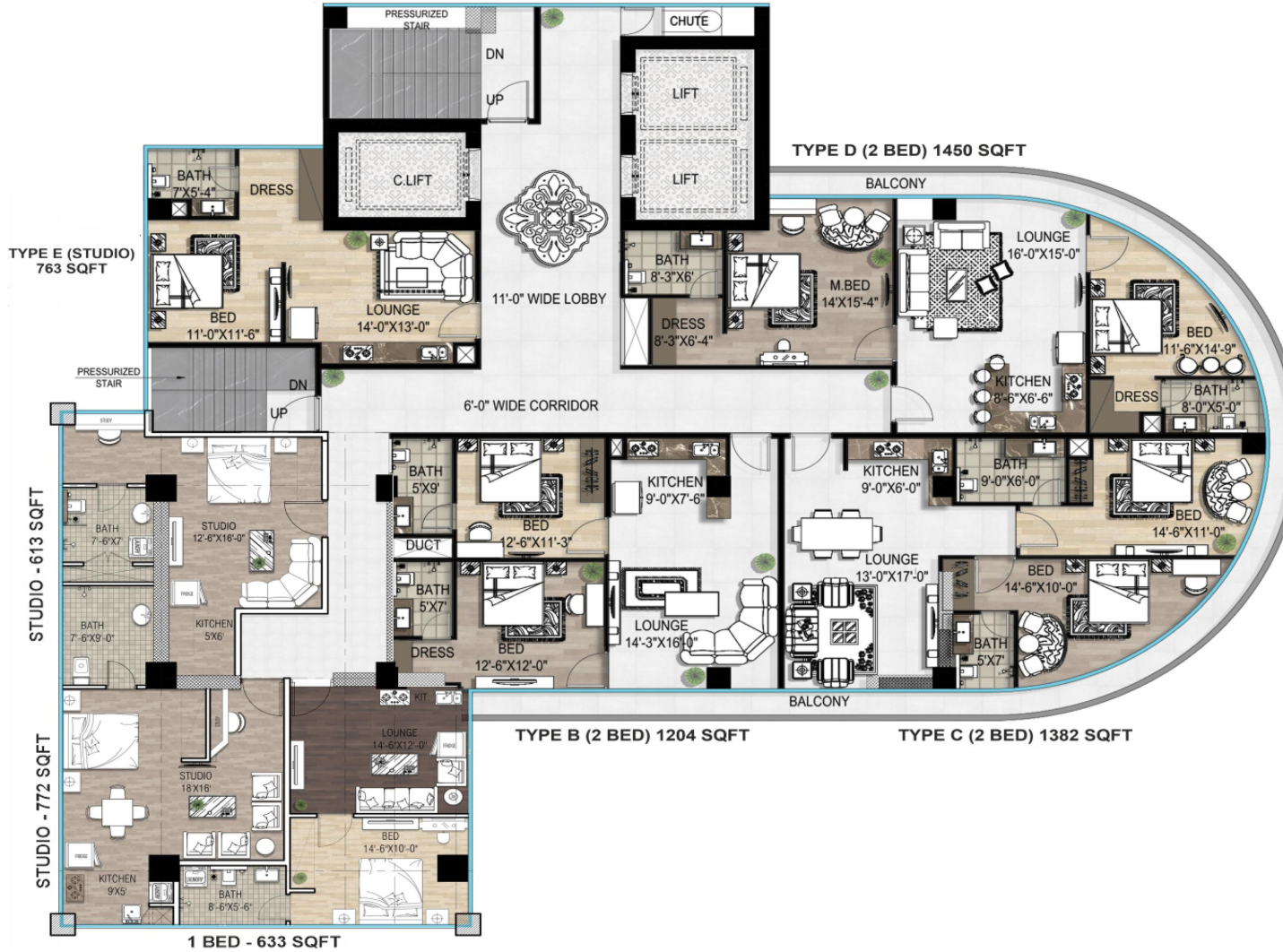


ROOF TOP RESTAURANT





05th TO 6th FLOOR PLAN



07th TO 8th FLOOR PLAN



09th TO 16th FLOOR PLAN



01 BED LUXURY LAYOUT



- Two Bedroom with attached Bath
- Dressing Room
- Balcony
- TV Lounge
- Open Kitchen
- Designated Car Parking

COVERED AREA: 1450 Sqft

02 BED LUXURY LAYOUT



- 🛏 Two Bedroom with attached Bath
- 🚪 Dressing Room
- 🏠 Balcony
- 📺 TV Lounge
- 🍳 Open Kitchen
- 🚗 Designated Car Parking
- 📍 Margalla Facing

COVERED AREA: 1382 Sqft

02 BED LUXURY LAYOUT



03 BED LUXURY LAYOUT



04 BED LUXURY LAYOUT



03 BED LUXURY



SERVANT QUARTER

17 FLOOR PLAN PENT HOUSE-1



- 🛏 Three Bedroom with attached Bath
- 👔 Dressing Room
- 📺 TV Lounge
- 🛋 Living Room
- 🍴 Dining Room
- 🔪 Open Kitchen
- 🚗 Designated Car Parking
- 🏠 Margalla Facing

COVERED AREA: 3125 Sqft

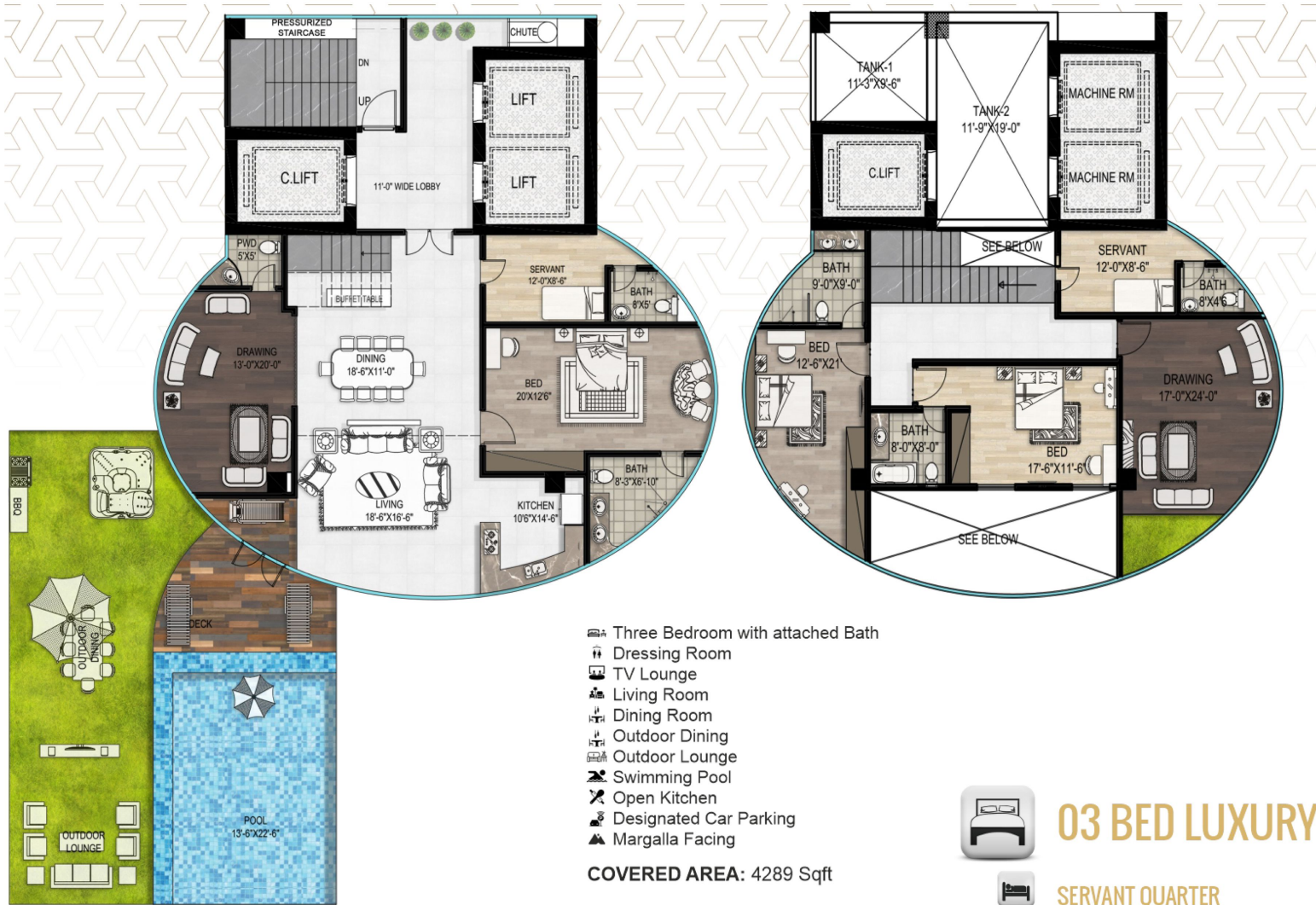
COVERED AREA = 3125 Sqft



03 BED LUXURY

SERVANT QUARTER

18 FLOOR PLAN PENT HOUSE-2



19th & 20th FLOOR PLAN PENT HOUSE



- ☞ Three Bedroom with attached Bath
- ☞ Dressing Room
- ☞ TV Lounge
- ☞ Drawing Room
- ☞ Dining Room
- ☞ Open Kitchen
- ☞ Servant Quarter
- ☞ Wide Lobby
- ☞ Swimming Pool
- ☞ Margalla Facing

COVERED AREA: 3454 Sqft



03 BED LUXURY



SERVANT QUARTER

21th & 22th FLOOR PLAN PENT HOUSE



BEYOND LUXURY

Exclusive Sales Partner



Project By



Architecture By



Head Office

Plot # 14, Block-E,
Main Gulberg Expressway,
Gulberg Greens, Islamabad.
www.gulbergmarina.com
Mob:0341-3787878